

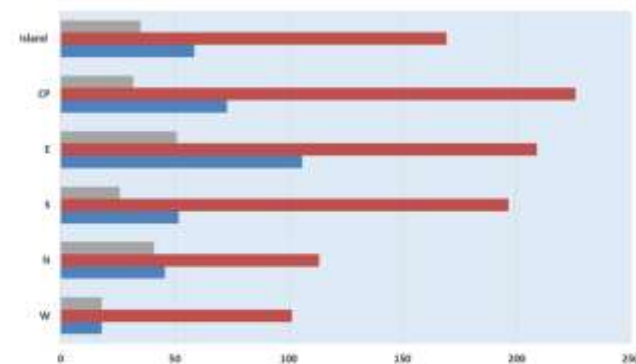
## Mauritius Meteorological Services

### Mean Rainfall for 1-15 February 2026 updated 19 February 2026

#### Mauritius

Dry atmospheric conditions prevailed over the island for the first fortnight of February 2026. The rainfall recorded amounted to 59 mm, representing 35 % of the long-term mean.

The West recorded the lowest rainfall amount of 18 mm and the lowest percentage of 18 % of the long term mean..



	W	N	S	E	EP	Island
■ PERCENTAGE (%) of first half LTM TERM MEAN for February 2026	18	41	26	51	52	35
■ First Half LTM (1991-2020) for February Rainfall (mm)	102	113	157	209	226	168
■ Actual Mean rainfall for 1st half February 2026 (mm)	18	46	52	106	73	59

#### Outer Islands

		Amount (mm)		
Stations		Actual Rainfall	LTM Rainfall	% of LTM
Rodrigues	Pointe Canon	15	69	22
	Plaine Corail	10	78	13
	Citronelle	8	107	7
Agalega		89	158	44
St Brandon		-	-	-

- Very dry and dry atmospheric conditions prevailed over Rodrigues and Agalega, respectively.
- Currently data is not available for St Brandon

*The right of publication in print, electronic and any other form is reserved by the Meteorological Services. Any part of this document may be reproduced provided complete source is acknowledged or after authorization from:*

**Acting Director, Meteorological Services,**

**St Paul Road, Vacoas.**

**Tel: 6861031/32, Fax: 6861033, email: [meteo@intnet.mu](mailto:meteo@intnet.mu)**

Updated on: 19 February 2026